



## 'Department Store'

Victorian styled department store incorporating a revolving door entrance. The store also has a loading bay and store room at the back of the building.

Two pillars and a span help to support the floors inside the main building.

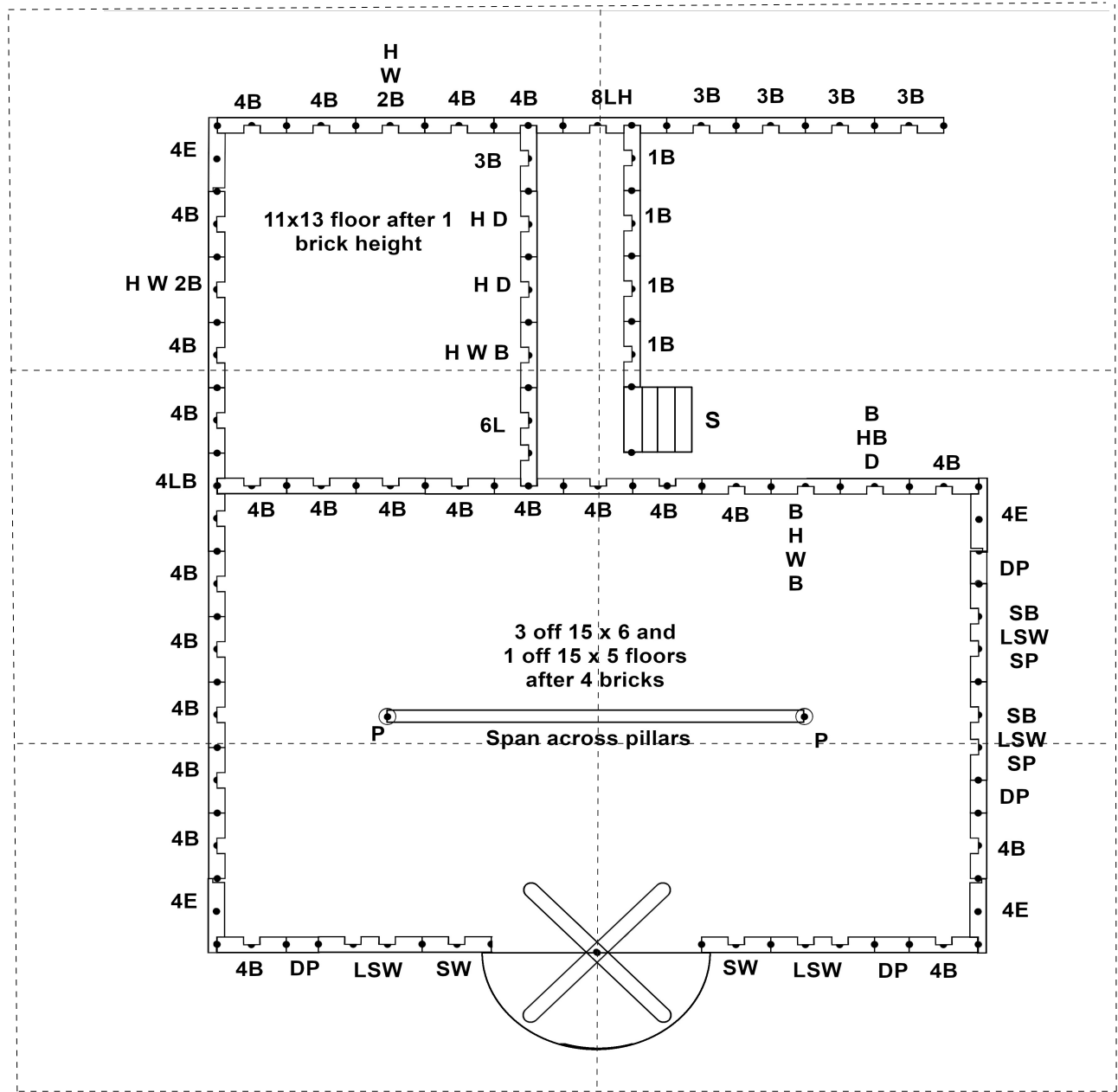


This model is compatible with all Bayko sets

### Ground Floor

#### Bayko Parts Required:

Bases.....	6
Bricks, Red.....	69
End Bricks, Red.....	8
Long Bricks.....	6
Bricks, White.....	100
Half Bricks, White.....	26
End Bricks, White.....	16
Long Bricks, White.....	15
Windows.....	15
Doors.....	3
Steps.....	1
Pillar.....	2
Span.....	1
Large Roof, Red.....	1
Roof. Type B .....	2
Floor 15x6.....	3
Floor 15x5.....	1
Floor 15x11.....	1
Rods, No. 6.....	33
Rods, No. 4.....	15
Rods, No. 3.....	4
Rods, No2 .....	8



This model is compatible with all Bayko sets

### First Floor

After forth layer, place floor in position, then continue building.

#### Extended Parts Required:

- Revolving Door..... 1
- Tall Windows..... 2
- Decorative Posts..... 4
- Window Panel..... 2
- Wide Window Panel..... 4
- Shop Window..... 2
- Wide Shop Window..... 4
- Wide Window Bridge..... 4
- Wide Bricks, Red..... 4

