



Terraced Row of Houses

A small row of terraced houses using a mixture of original and extended Bayko parts. The houses are completed with a back yard each.

The row can easily be extended by adding bases and continue building according to the pattern. Make a row of three, six, nine or as many houses as you wish. Each roof section covers one and a half houses.

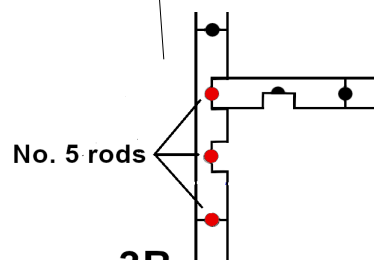
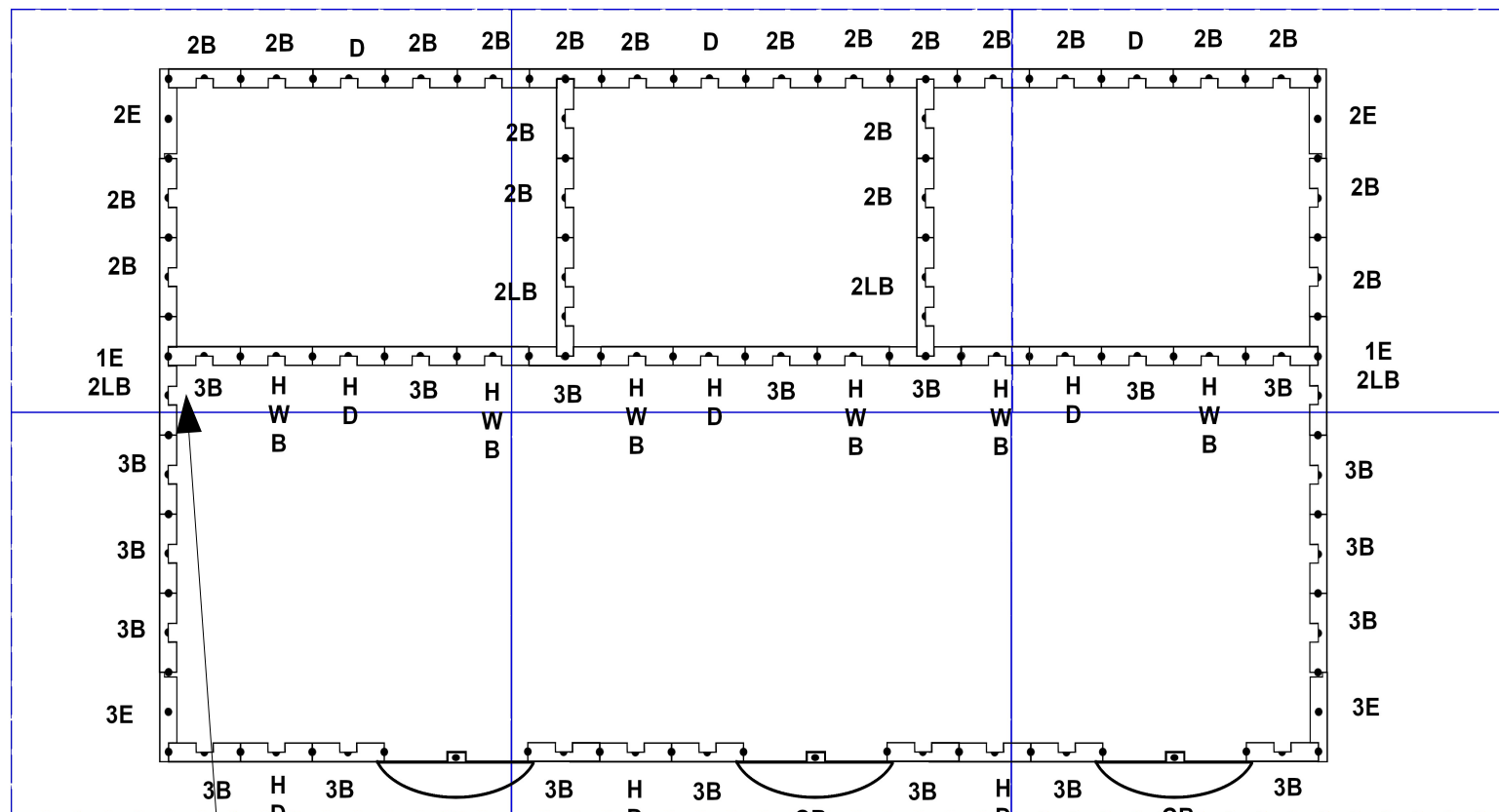
Entrance doors have an optional stone arch decoration. The back yard walls can be finished off with wall capping



Ground Floor

Bayko Parts Required:

Bases.....	6
Bricks, Red.....	72
End Bricks, Red.....	8
Bricks, White.....	62
End Bricks, White.....	12
Half Bricks, white	26
Curved Bricks, Red.....	6
Curved Bricks, White.....	3
Windows.....	6
Curved Windows.....	3
Doors.....	6
Roof Ends type C.....	4
Roof. Type C	4
Floor 15x11.....	2
Floor 7x11	1
Rods, No. 5.....	46
Rods, No2	29
Chimney, small red	3



Note: Use three No 5 rods in the junctions using special wide bricks so that end bricks will fit over on top. This give a seamless join for the back yard walls.
Use Back Gates where a door id indicated in the back yard wall.

First Floor

After third layer, place floor in position, then continue building.

Extended Parts

Required:

- Decorated half bricks, 3
- Wide Bricks, Red..... 4
- Back Gates..... 3
- Wall Capping, double, end.. 4
- Wall Capping, double..... 3
- Wall Capping, 4
- Wall Capping, T 2
- Wall Capping, corner..... 2

